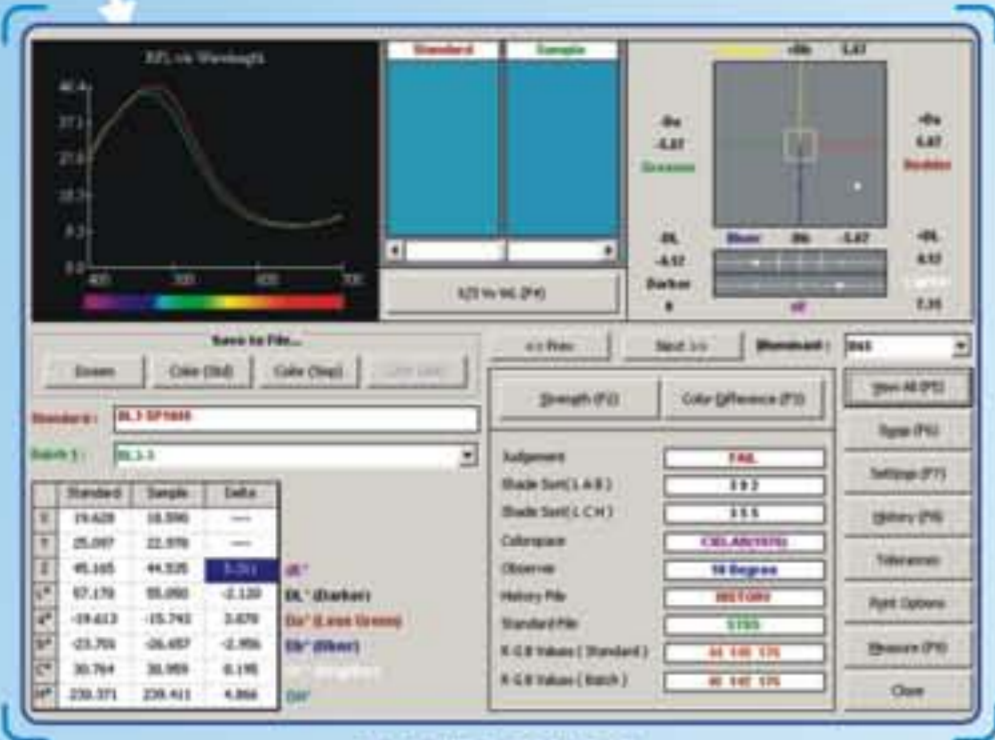
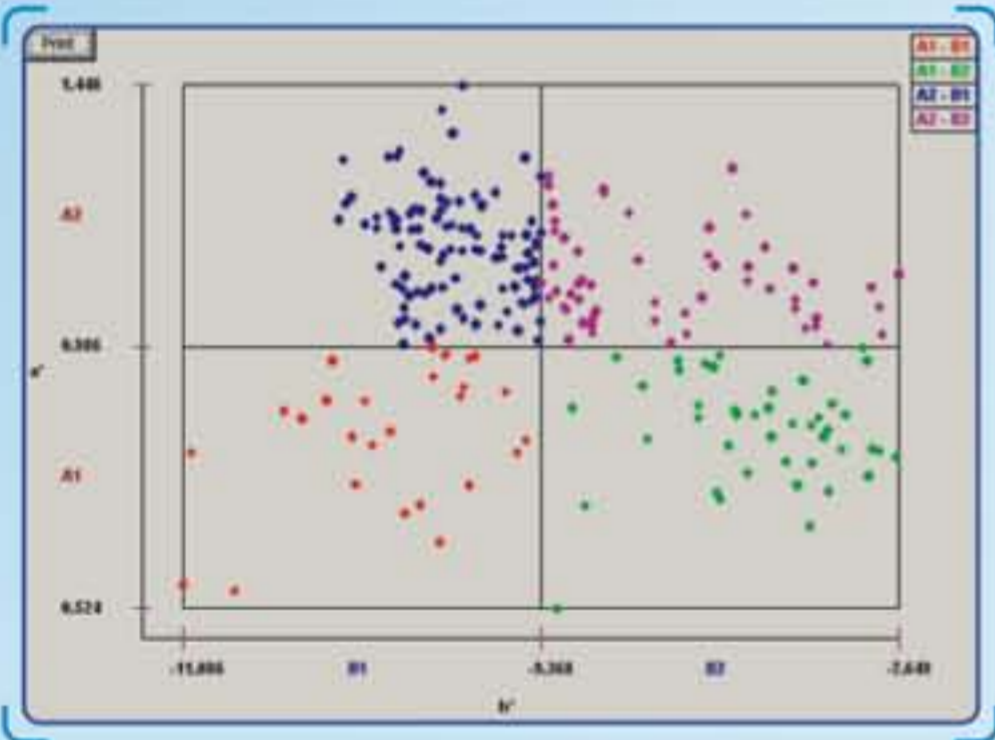


Colorlab+

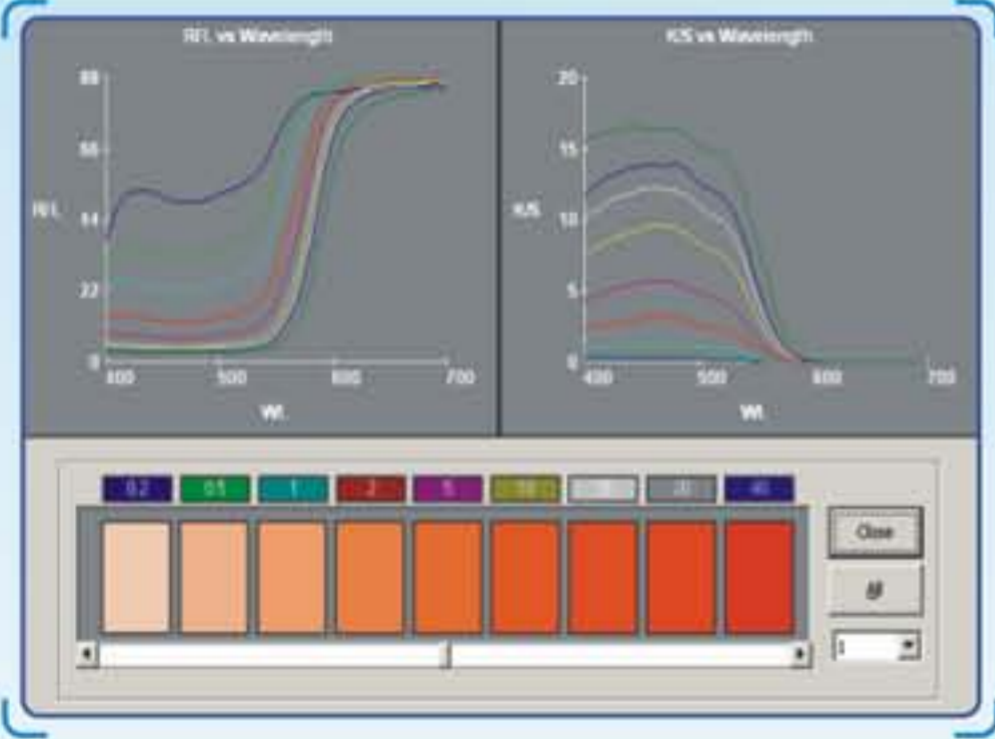
Color Matching Software



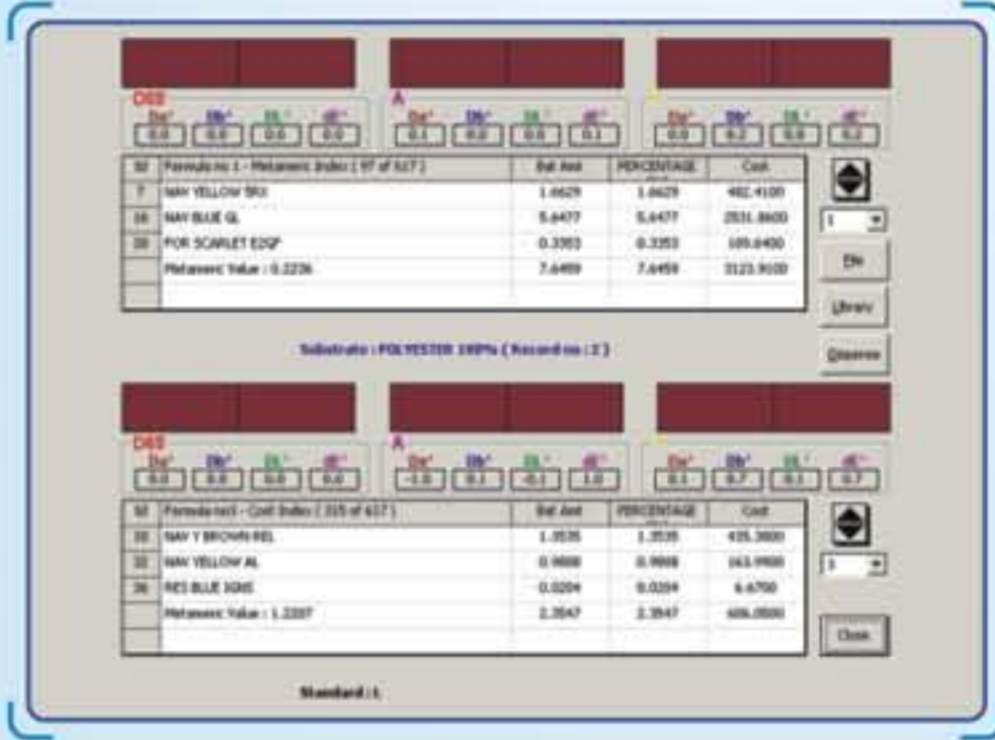
QUALITY CONTROL



GROUPING



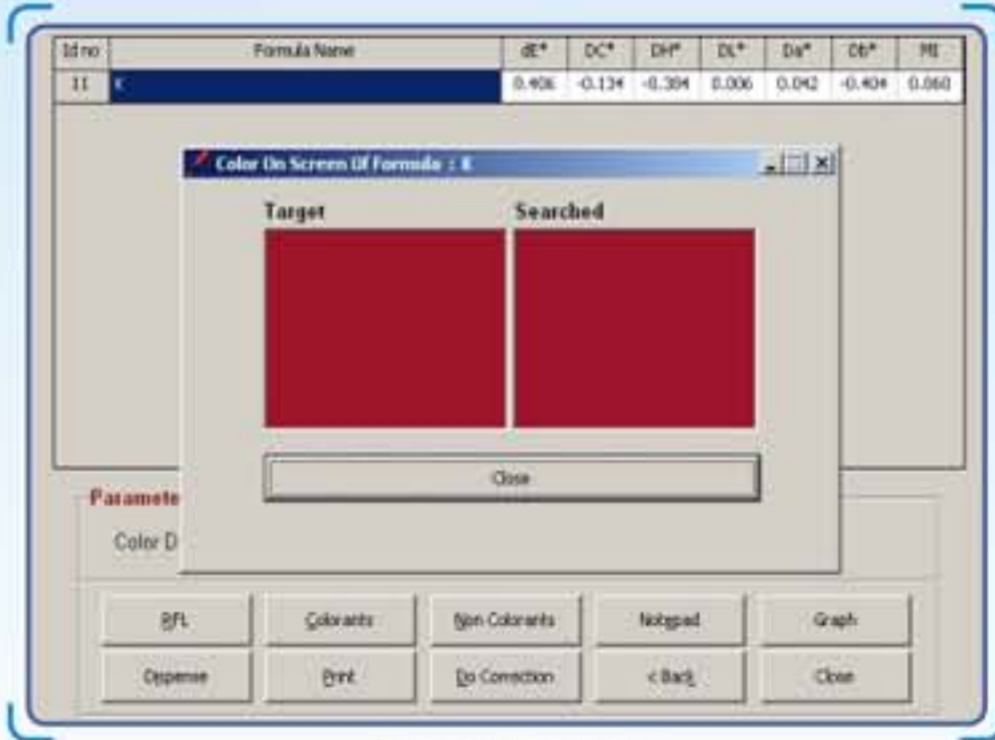
DATABASE



FORMULATION



BATCH CORRECTION



LIBRARY SEARCH

Software Compatible With All Major brands of Spectrophotometers



LEADER IN THE FIELD OF COMPUTERIZED COLOR MATCHING

SPECTRUM OF SOFTWARE

OUTPUTS

- ▶ Color Difference
- ▶ Colorant Strength
- ▶ Whiteness
- ▶ Yellowness
- ▶ Brightness
- ▶ Spectral Data
- ▶ Gray Scale AATCC
- ▶ Gray Scale ISO 105

OBSERVERS

- ▶ Staining Scale AATCC
- ▶ Staining Scale ISO 105
- ▶ Contrast Ratio / Opacity
- ▶ Pass / Fail
- ▶ 555 Shade Sort
- ▶ Color-On-Screen
- ▶ Metamerism Index
- ▶ OBA Fluorescence

STRENGTH ANALYSIS

- ▶ At wavelength of maximum absorbance
- ▶ At user selected wavelength
- ▶ Integrated strength
- ▶ Saunderson corrected strength
- ▶ Adjusted color difference with space diagram

COLOR SPACES

- ▶ C.I.E.L.* a* b*
- ▶ FMC II
- ▶ HUNTER L a b
- ▶ C M C 2:1/1:1
- ▶ ANLAB 50
- ▶ CIE 94
- ▶ BFD
- ▶ CIE 2000

ILLUMINANTS

- ▶ D 50
- ▶ D 65 CIE daylight
- ▶ D 75
- ▶ A Incandescent
- ▶ C CIE Average daylight
- ▶ F3 CIE fluorescent light
- ▶ CWF Cool white fluorescent
- ▶ TL 84 Showroom Illumination
- ▶ UL 30 Ultralume
- ▶ Horizon

INDICES

- ▶ **Whiteness**
 - ▶ Stephensen
 - ▶ Harrison
 - ▶ Berger
 - ▶ Stensby
 - ▶ CIE
 - ▶ Hunter
 - ▶ ASTM E 313
- ▶ **Yellowness**
 - ▶ ASTM D1925
 - ▶ ASTM E 313
- ▶ **Brightness**
 - ▶ TAPPI / ISO
- ▶ **Food**
 - ▶ Tomato Color Index
 - ▶ Citrus Redness Index
 - ▶ Citrus Yellowness Index
 - ▶ Orange Juice Index
- ▶ **Paper**
 - ▶ Ganz

FORMULATION

- ▶ Least Cost Recipes
- ▶ Least Metameric Recipes
- ▶ Formula-on-screen
- ▶ Opacity Loading Prediction

CORRECTION

- ▶ Reformulation
- ▶ Batch Correction
- ▶ Automatic/Manual add
- ▶ Waste Correction

SPECIALISED SOFTWARES

- CURVE GENERATION
- DYESTUFF / PIGMENT BLENDING
- SHADE LIBRARY WITH BATCH CORRECTION
- MASTER SATELLITE SOFTWARE
- INK MATCHING
- GROUPING
- HISTORY
- KINETICS

APPLICATIONS

- | | | | |
|-------------------|----------------------|--------------------|----------------|
| Apparel | Cosmetics | Ink | Pharmaceutical |
| Appliances | Dyestuff | Leather | Pigment |
| Automotive | Fiber | Mineral | Plastics |
| Business Machines | Floor and Wall Tiles | Optical Brightener | Rubber |
| Carpet | Food | Packaging | Textiles |
| Cement | Food Color | Paint | Threads |
| Ceramic | Glass | Paper | Yarn |
| Chemicals | Graphic Art | | |

Any Color related Application

Marketed by:



Premier Colorscan Instruments Pvt. Ltd.

EL-130, Electronic Zone, M.I.D.C., Mahape, Navi Mumbai - 400 710. India.

Telephone: +91 22 2763 7900 / 2768 7900 Fax: +91 22 2762 2022 / 2762 2124 / 2763 7921